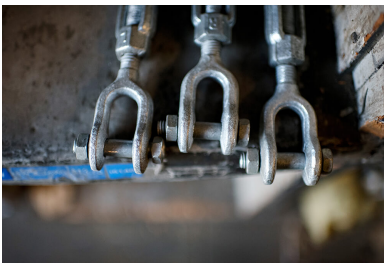


# Jaw And Jaw Galvanized Turbuckle (Imported)

CATALOG (SKU) NUMBER: TBKL J

- Made of drop forged carbon steel.
- Galvanized finish meets ASTM A-153 specification.
- Meets design requirements of ASTM F1145, Type 1, Grade 1.
- Design factor is 5:1.
- Other styles, sizes, and stainless steel available upon request.
- Domestic available upon request.



Jaw TBKL Shelf Shot



Jaw TBKL WB

## Product Specifications

JAW AND JAW GALVANIZED TURNBUCKLE (IMPORTED)												
PART NUMBER	SIZE (IN)	WORKING LOAD LIMIT (LBS)	DIMENSIONS (IN)									WEIGHT EACH (LBS)
			A	B	C (CLOSED)	D	E (OPEN)	F (CLOSED)	G (OPEN)	H (CLOSED)	I	
I51455	1/4 X 4	500	0.250	0.450	1.660	0.640	11.190	7.200	12.180	8.180	4.070	0.370
I51460	5/16 X 4-1/2	800	0.310	0.500	2.020	0.870	13.070	8.570	14.120	9.620	4.580	0.560
I54165	3/8 X 6	1,200	0.380	0.530	2.110	0.850	16.250	10.250	17.500	11.500	6.100	0.850
I51470	1/2 X 6	2,200	0.500	0.640	3.220	1.070	18.650	12.650	20.150	14.150	6.030	1.820
I51475	1/2 X 9	2,200	0.500	0.640	3.200	1.070	24.950	15.950	26.430	17.430	9.360	2.290
I51480	1/2 X 12	2,200	0.500	0.640	3.200	1.070	30.950	18.950	32.430	20.430	12.360	2.710
I51482	5/8 X 6	3,500	0.630	0.790	3.900	1.320	19.750	13.750	21.820	15.820	6.030	3.210
I51485	5/8 X 9	3,500	0.630	0.790	3.890	1.320	26.080	17.080	28.160	19.160	9.390	3.950
I51490	5/8 X 12	3,500	0.630	0.790	3.890	1.320	32.080	20.080	34.160	22.160	12.390	4.580
I51497	3/4 X 6	5,200	0.750	0.970	4.710	1.520	21.100	15.100	23.680	17.680	6.130	4.800
I51500	3/4 X 9	5,200	0.750	0.970	4.680	1.520	27.500	18.500	30.080	21.080	9.590	5.850
I51505	3/4 X 12	5,200	0.750	0.970	4.680	1.520	33.500	21.500	36.080	24.080	12.590	6.720
I51510	3/4 X 18	5,200	0.750	0.970	4.710	1.520	45.500	27.500	48.080	30.080	18.530	8.450



**JAW AND JAW GALVANIZED TURNBUCKLE (IMPORTED)**

I51515	7/8 X 12	7,200	0.880	1.160	5.500	1.770	34.650	22.650	37.620	25.620	12.160	9.370
I51520	7/8 X 18	7,200	0.880	1.160	5.500	1.770	47.120	29.120	50.100	32.100	18.630	11.800
I51525	1 X 12	10,000	1.000	1.340	6.090	2.050	35.820	23.820	39.180	27.180	12.180	13.800
I51530	1 X 18	10,000	1.000	1.340	6.090	2.050	47.820	29.820	51.180	33.180	18.180	17.100
I51535	1-1/4 X 18	15,200	1.250	1.840	8.090	2.820	51.370	33.370	55.580	37.580	18.050	25.900